

TREE PROTECTION

CHAIN LINK FENCE REQUIRED FOR TREE PROTECTION

TREE PROTECTION

CHAIN LINK FENCE REQUIRED FOR TREE PROTECTION

SOIL INSPECTION  
REQUIRED BY ENGINEER

MINIMUM 10% ORGANIC  
MULCH AND COMPOST  
SOIL REQUIRED

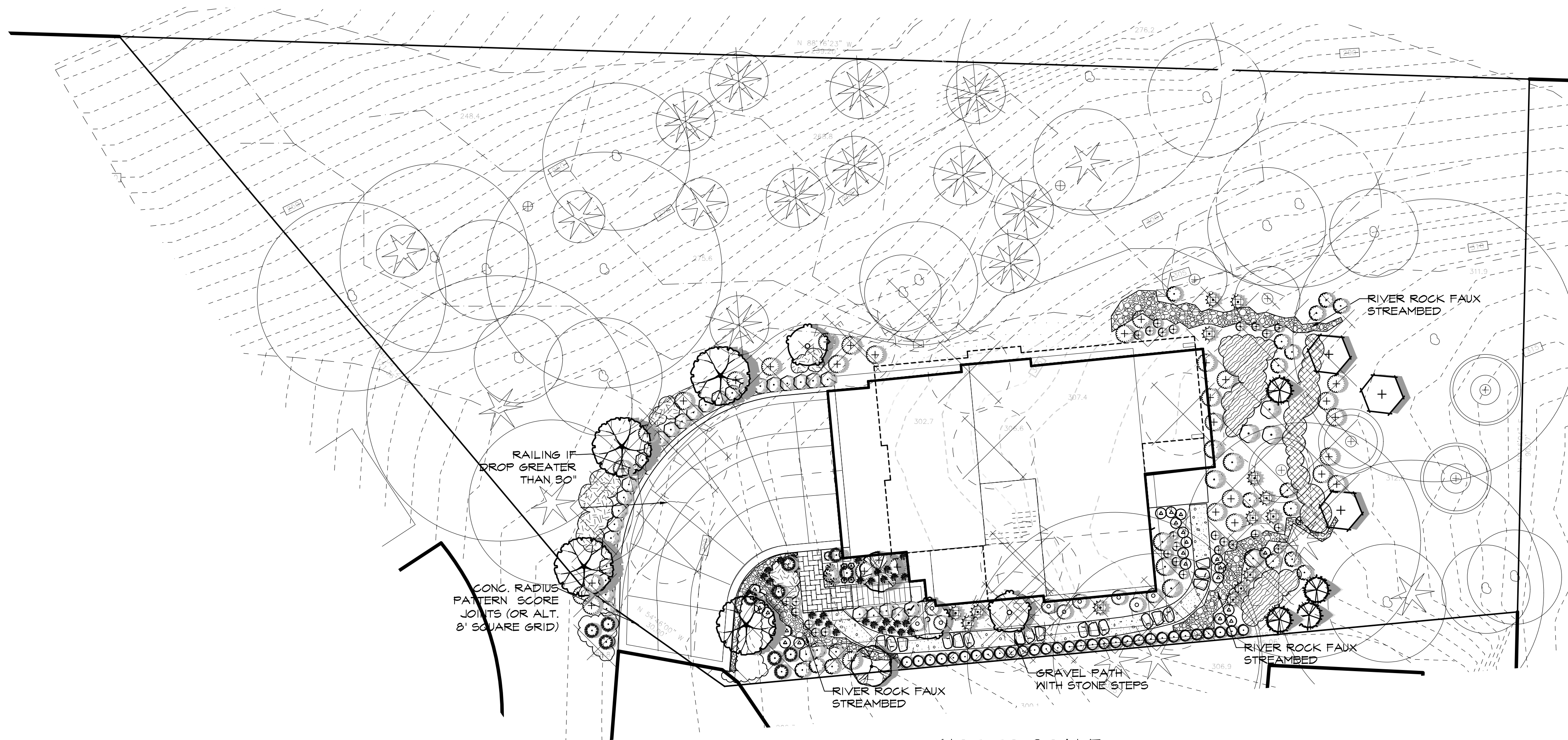
SOIL AMENDMENT REQUIRED

COMPOST AMENDED SOIL REQUIRED ON ALL LANDSCAPED AREAS AFTER CONSTRUCTION.  
SEE DETAIL.

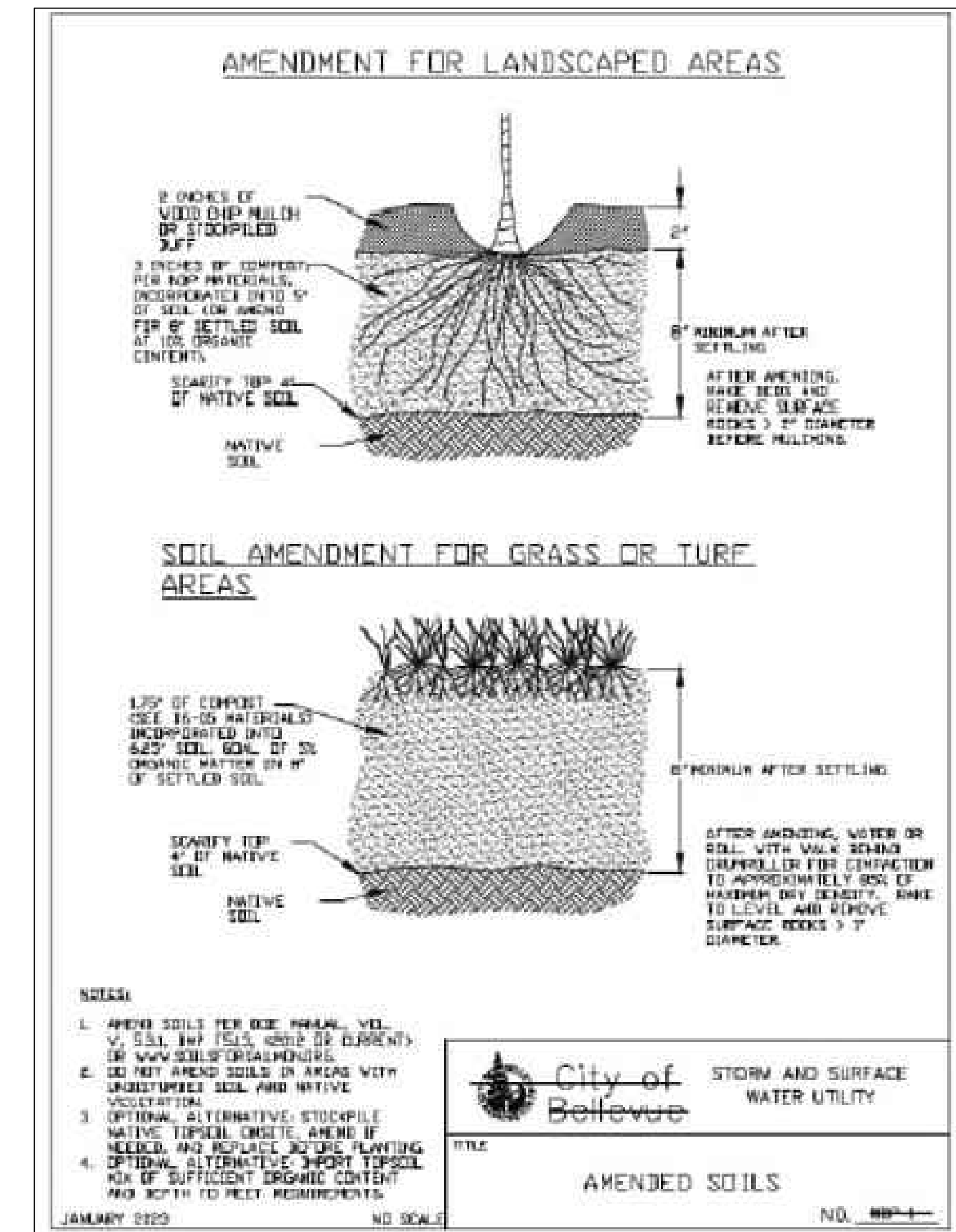
SOIL INSPECTION REQUIRED BY ENGINEER

A POST CONSTRUCTION INSPECTION AND CERTIFICATION OF AMENDED SOILS IS REQUIRED BY  
A LICENSED CIVIL ENGINEER. THIS IS REQUIRED BEFORE FINAL SIGN-OFF BY CITY.

COMPOST AMENDED SOIL SPEC



NOT TO SCALE



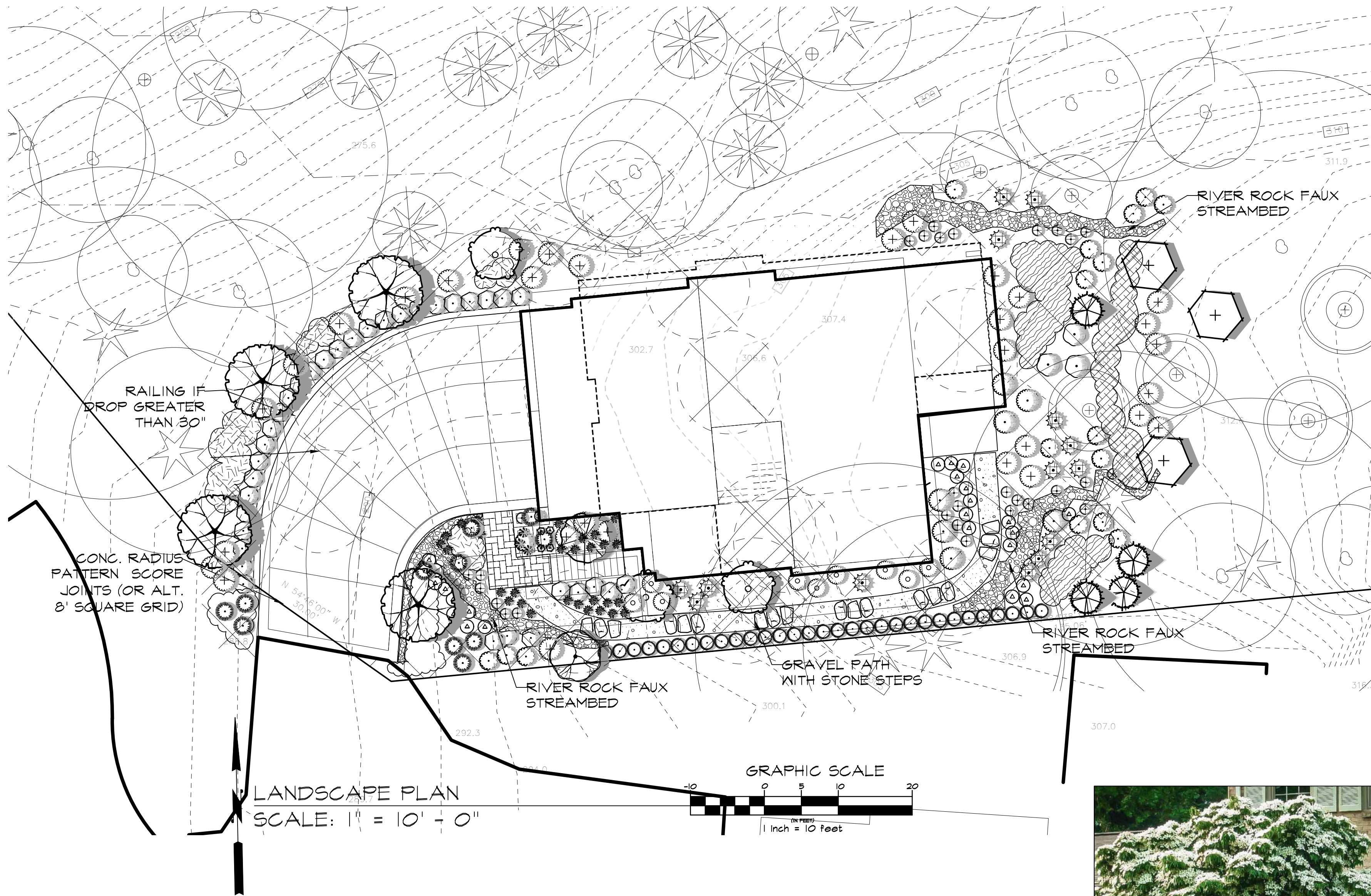
Created: 12-28-23 PRELIMINARY PLAN  
 L: 4-26-24 REVISED TO ADD TREES AND SOIL REQUIREMENTS  
 Drawn: REB  
 GCA

CRAMER DESIGN CONSULTANTS, INC.  
 LANDSCAPE ARCHITECT  
 1909 242ND STREET SE  
 BOTHELL, WA 98021  
 425-241-6258

STATE OF WASHINGTON  
 REGISTERED  
 LANDSCAPE ARCHITECT  
*Rayl Cramer*  
 RAYL L. CRAMER  
 CERTIFICATE NO. 6334

CHEN RESIDENCE  
 5024 N. MERCER WAY, MERCER ISLAND, WA

SHEET  
**L-01**  
 OF 2 SHEETS



Pacific Fire Vine Maple



Bloodgood Japanese maple



Coral Bark Maple



Kousa Dogwood

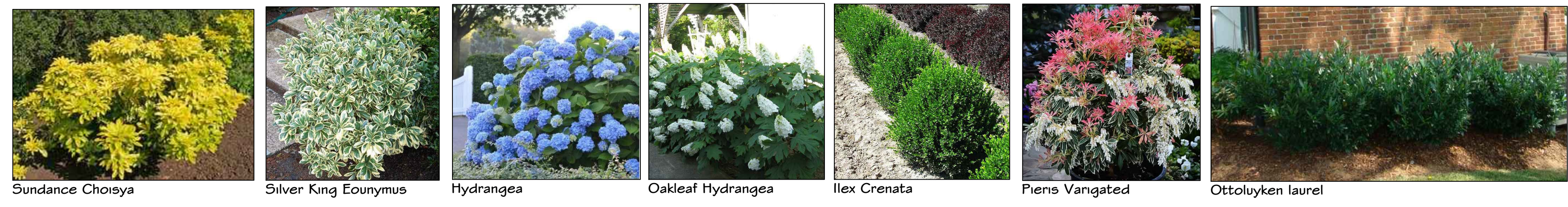


Pyramidal Hornbeam

PLANT SCHEDULE

SYMBOL	BOTANICAL / COMMON NAME	SIZE	QTY	
<b>DECIDUOUS TREES</b>				
	Acer palmatum 'Sango Kaku' / Coral Bark Maple or similar small specimen tree	6'-7' Ht.	1	
	Carpinus betulus 'Columnaris' / Columnar European Hornbeam	2' Cal	3	
<b>REPLACEMENT TREES</b>				
	Acer circinatum / Vine Maple	2' Cal	3	
	Acer palmatum 'Bloodgood' / Bloodgood Japanese Maple	6'-7' Ht	1	
	Cornus kousa / Kousa Dogwood	6'-7' Ht	4	
	Tsuga mertensiana / Mountain Hemlock	4'-6' Ht	4	
			<b>12 TOTAL</b>	
<b>SHRUBS</b>				
	Azalea x 'Hino-crimson' / Hino-crimson Kurume Azalea	2 gal	30	
	Choisya ternata 'Sundance' / Golden Mexican Mock Orange	5 gal	14	
	Euonymus japonicus 'Silver King' / Silver King Euonymus	5 gal	1	
	Hydrangea macrophylla 'Coerulea Lace' / Blue Lacecap Hydrangea	24/30"	3	
	Hydrangea quercifolia / Oakleaf Hydrangea	5 gal	7	
	Ilex crenata 'Green Lustre' / Green Luster Japanese Holly	3 gal	24	
	Pieris japonica / Lily of the Valley Bush	24/30"	9	
	Prunus laurocerasus 'Otto Luyken' / Otto Luyken Laurel	24/30"	35	
	Rhododendron var. / Rhododendron	5 gal	31	
	Rhododendron x 'Scarlet Wonder' / Scarlet Wonder Dwarf Rhododendron	5 gal	16	
	Thuja occidentalis / Emerald Green thuja Match Existing	5'-6" Ht	31	
<b>GRASSES</b>				
	Carex oshimensis 'Evergold' / Variegated Japanese Sedge	1 gal	29	
	Helictotrichon sempervirens / Blue Oat Grass	1 gal	3	
	Miscanthus sinensis 'Morning Light' / Eulalia Grass	5 gal	11	
<b>ANNUALS/PERENNIALS</b>				
	Bergenia x 'Morning Red' / Bergenia	1 gal	4	
<b>SYMBOL BOTANICAL / COMMON NAME SIZE SPACING QTY</b>				
<b>GROUND COVERS</b>				
	Arctostaphylos uva-ursi 'Emerald Carpet' / Emerald Carpet Manzanita	1 gal	30" o.c.	28
	Liriope muscari / Lily Turf	1 gal	36" o.c.	26
	Ophiopogon planiscapus 'Nigrescens' / Black Mondo Grass	4" pot	12" o.c.	127
<b>SITE WORK</b>				
	BARK 2" Depth	None		225 sf
	PLANTING BEDS 2" Bark, 6" Soil	None		2,789 sf
	RIVER ROCK	None		260 sf

	TREE DRIP LINE		
	EVERGREEN TREE		
	DECIDUOUS TREE		
	TREE TO BE REMOVED		
	TREE PROTECTION FENCING MUST BE PLACED PRIOR TO CONSTRUCTION ACTIVITY		
	"E" REPRESENTS EXCEPTIONAL TREES. IN EXCESS OF 36" DBH		
	DOUGLAS FIR	10	
	WESTER RED CEDAR	10	
	VINE MAPLE	29	
	Fuyu persimmon	2	
	Magnolia	2	
	Flowering dogwoods	2	



Sundance Choisya Silver King Eounymus Hydrangea Oakleaf Hydrangea Ilex Crenata Pieris Vanigated Ottolyken laurel



Hino Crimson Azalea Rhododendron Scarlet Rhododendron EG Thuja and Miscanthus Morning Light Carex Evergold Blue Oat grass Berginia Kinnikinnick Liriope

NOTES:  
NO LAWN IS PROPOSED  
ALL LANDSCAPING IS IN PLANTING BEDS  
TOTAL PLANTING AREAS = 2789 SF  
TOTAL MULCH/ BARK AREAS = 225 SF

Drawn: REB  
 Checked: 12-8-23 PRELIMINARY PLAN  
 1. 4-3-24 changed lawn to planting beds and added plants removed walls GCA  
 2. 4-26-24 added ex trees and replacement trees GCA

CRAMER DESIGN CONSULTANTS, INC.  
 LANDSCAPE ARCHITECT  
 1909 242ND STREET SE  
 BOTHELL, WA 98021  
 425-241-6258

STATE OF WASHINGTON  
 REGISTERED  
 LANDSCAPE ARCHITECT  
 Kyle L. Cramer  
 CERTIFICATE NO. 634

CHEN RESIDENCE  
 5024 W. MERCER WAY, MERCER ISLAND, WA

SHEET  
 L-02  
 OF 2 SHEETS